

The rechargeable batteries are lead-lead dioxide systems. The dilute sulfuric acid electrolyte is absorbed by separators and plates and thus immobilized. Should the battery be accidentally overcharged producing hydrogen and oxygen, special oneway valves allow the gases to escape thus avoiding excessive pressure build-up. Otherwise, the battery is completely sealed and is, therefore, maintenance-free, leak proof and usable in any position.



Battery Construction

Component	Positive plate	Negative plate	Container	Cover	Safety valve	Terminal	Separator	Electrolyte
Raw material	Lead dioxide	Lead	ABS	ABS	Rubber	Copper	Fiberglass	Sulfuric acid

General Feature

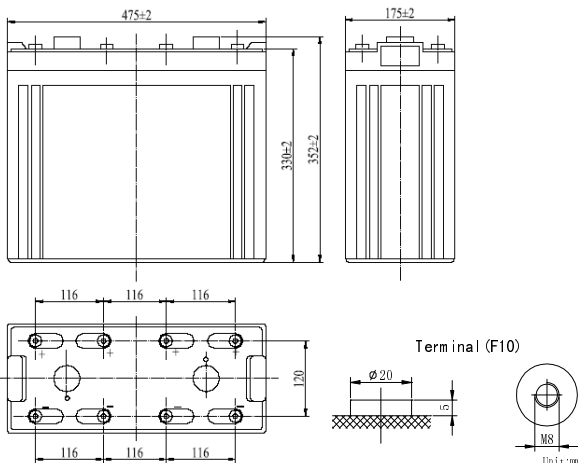
- Absorbent Glass Mat(AGM) technology for efficient gas recombination of up to 99% and freedom from electrolyte maintenance or water adding.
- Not restricted for air transport-complies with IATA/ICAO Special Provision A67.
- UL-recognized component.
- Can be mounted in any orientation.
- Computer designed lead, calcium tin alloy grid for high power density.
- Long service life, float or cyclic applications.
- Maintenance-free operation.
- Low self discharge.

Performance Characteristics

Capacity 77°F(25°C)	10 hour rate (100A、1.8V)	1000Ah
	5 hour rate (178A、1.75V)	890Ah
	3 hour rate (252A、1.70V)	756Ah
	1 hour rate (615A、1.60V)	615Ah
Internal Resistance	Full charged Battery77°F(25°C): 0.5mΩ	
Capacity affected by Temperature (10 hour rate)	104° F(40°C)	102%
	77° F(25°C)	100%
	32° F(10°C)	85%
	5° F(-15°C)	65%
Self-Discharge 68°F(20°C)	Capacity after 3 month storage	90%
	Capacity after 6 month storage	80%
	Capacity after 12month storage	60%
Max. discharge current77°F(25°C): 3000A(5S)		
Charge (Constant Voltage)	Float: 2.25~2.30 V/77° F(25°C)	
	Cycle:2.35~2.45 V/77°F(25°C) Max. Current: 200A	

SPECIFICATION

- Nominal voltage 2V
 Number of cell 1
 Length(mm/inch) 475/18.7
 Width(mm/inch) 175/6.89
 Height(mm/inch) 330/13.0
 Total Height(mm/inch) 367/14.45
 Approx. Weight(kg/lbs) 62/136.6



Total height with removable cover:367

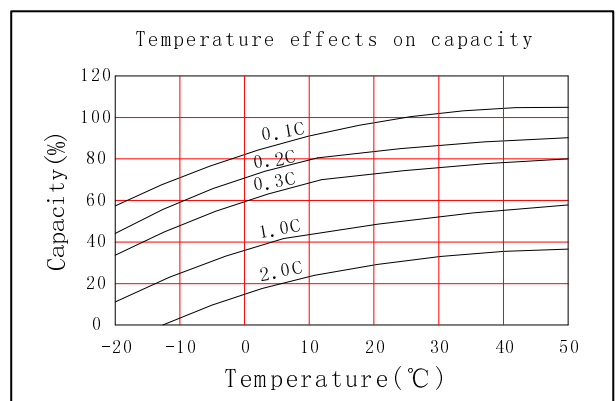
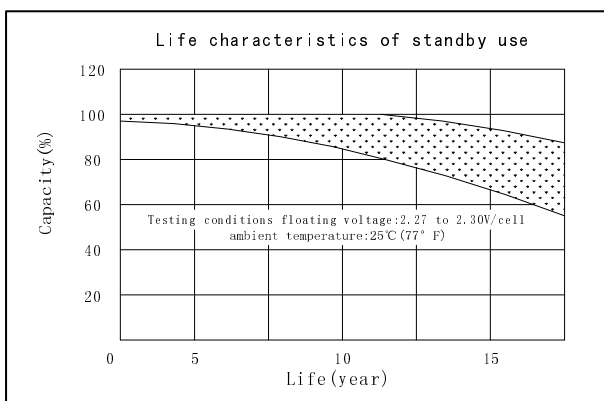
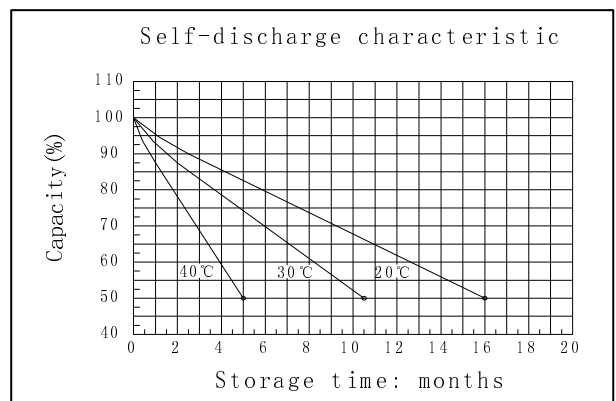
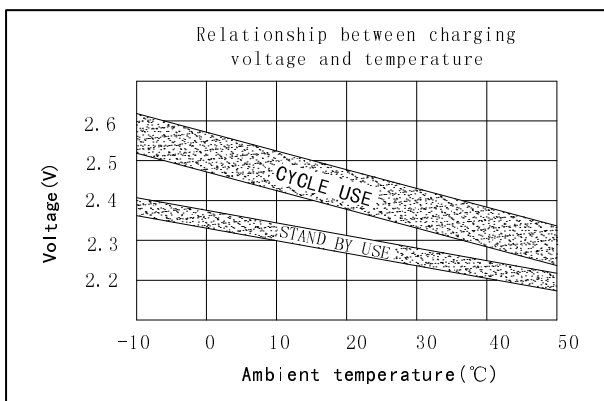
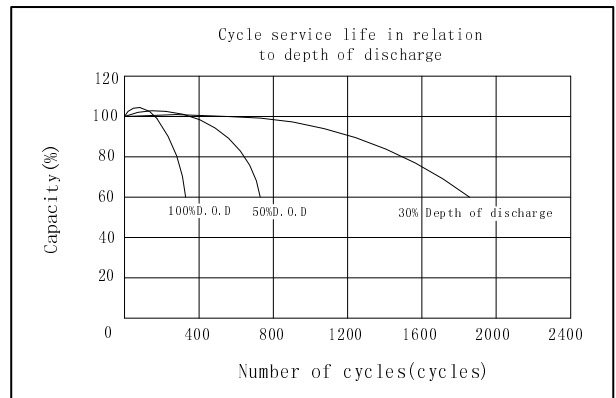
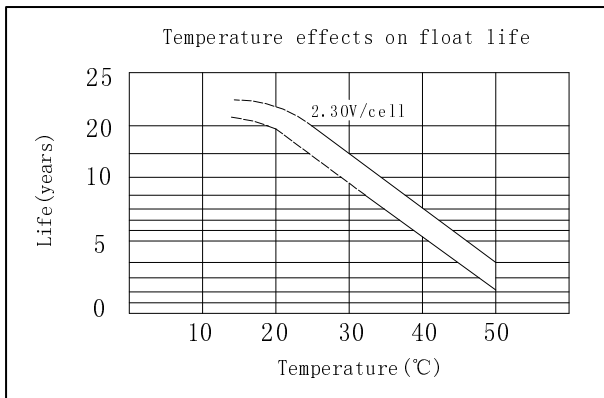
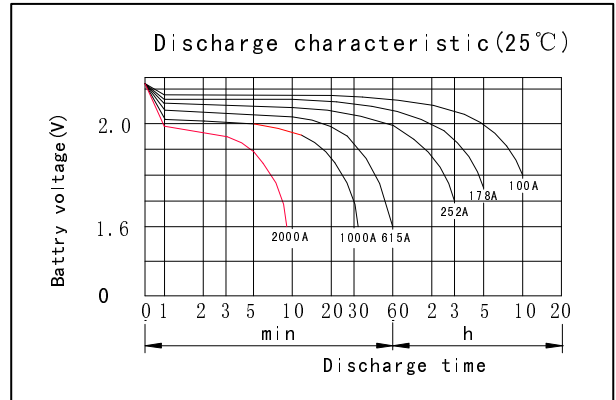
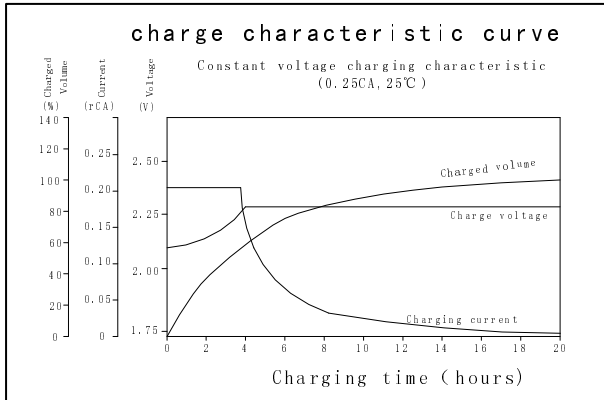
Discharge Constant Current (Amperes at 77° F25 °C)

End Point Volts/Cell	5min	10min	15min	30min	45min	1h	3h	5h	10h
1.60V		1850	1405	1060	755	615	260	192	107
1.65V		1750	1335	1013	725	598	256	188	106
1.70V		1650	1265	964	693	578	252	183	104
1.75V		1550	1195	915	660	550	248	178	102
1.80V		1450	1123	863	625	530	243	172	100

Discharge Constant Power (watts at 77° F 25 °C)

End Point Volts/Cell	5min	10min	15min	30min	45min	1h	2h	3h	5h
1.60V		2965	2421	1804	1360	1114	720	522	360
1.65V		2793	2290	1713	1298	1067	702	507	354
1.70V		2620	2158	1621	1233	1018	688	497	348
1.75V		2447	2024	1527	1166	967	676	488	341
1.80V		2276	1890	1432	1099	915	661	476	335

(Note)The above characteristics data are average values obtained Within three charge/discharge cycles not the minimum values.



GREAT POWER BATTERY TECHNOLOGY CO.,LTD
 Address: Longguan 1st Road, LongHua Town, BaoAn District, Shenzhen, China.
 TEL: 86-755-2900 8403 Fax: 86-755-3386 3366
 Email: info@greatpowerbattery.com Http:// www.greatpowerbattery.com