

The rechargeable batteries are lead-lead dioxide systems. The dilute sulfuric acid electrolyte is absorbed by separators and plates and thus immobilized. Should the battery be accidentally overcharged producing hydrogen and oxygen, special oneway valves allow the gases to escape thus avoiding excessive pressure build-up. Otherwise, the battery is completely sealed and is, therefore, maintenance-free, leak proof and usable in any position.



Battery Construction

Component	Positive plate	Negative plate	Container	Cover	Safety valve	Terminal	Separator	Electrolyte
Raw material	Lead dioxide	Lead	ABS	ABS	Rubber	Copper	Fiberglass	Sulfuric acid

General Feature

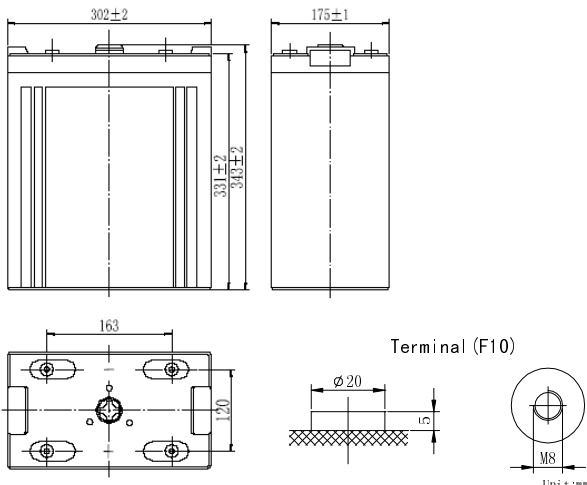
- Absorbent Glass Mat(AGM) technology for efficient gas recombination of up to 99% and freedom from electrolyte maintenance or water adding.
- Not restricted for air transport-complies with IATA/ICAO Special Provision A67.
- UL-recognized component.
- Can be mounted in any orientation.
- Computer designed lead, calcium tin alloy grid for high power density.
- Long service life, float or cyclic applications.
- Maintenance-free operation.
- Low self discharge.

Performance Characteristics

Capacity 77°F(25°C)	10 hour rate (70A、1.80V)	700Ah
	5 hour rate (125A、1.75V)	625Ah
	3 hour rate (185A、1.70V)	555Ah
	1 hour rate (450A、1.60V)	450Ah
Internal Resistance	Full charged Battery77°F(25°C): 0.6mΩ	
Capacity affected by Temperature (20 hour rate)	104° F(40°C)	102%
	77° F(25°C)	100%
	32° F(10°C)	85%
	5° F(-15°C)	65%
Self-Discharge 68°F(20°C)	Capacity after 3 month storage	90%
	Capacity after 6 month storage	80%
	Capacity after 12month storage	60%
Max. discharge current77°F(25°C): 2000A(5S)		
Charge (Constant Voltage)	Float: 2.25~2.30 V/77° F(25°C)	
	Cycle:2.35~2.45 V/77°F(25°C) Max. Current: 140A	

SPECIFICATION

- Nominal voltage 2V
 Number of cell 1
 Length(mm/inch) 302/11.9
 Width(mm/inch) 175/6.89
 Height(mm/inch) 330/13.0
 Total Height(mm/inch) 367/14.45
 Approx. Weight(kg/lbs) 40/88.2



Total height with removable cover:367

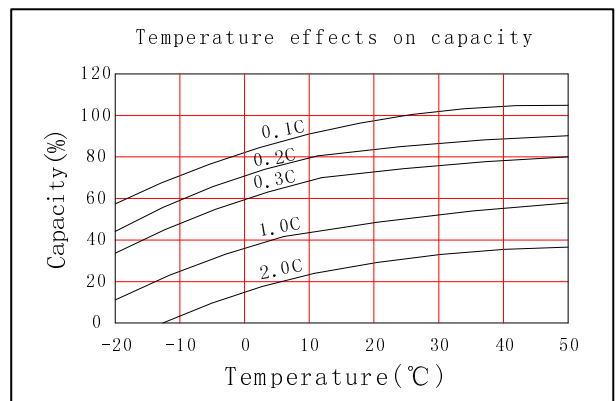
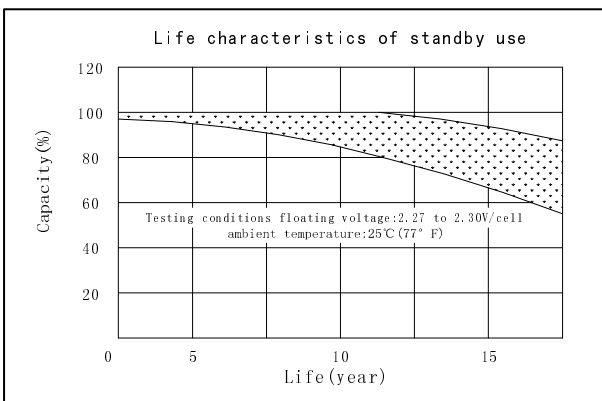
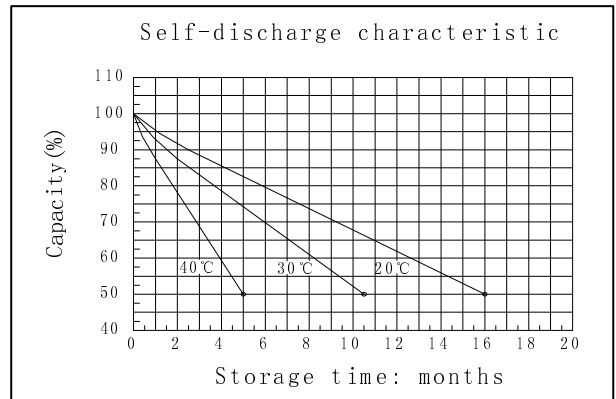
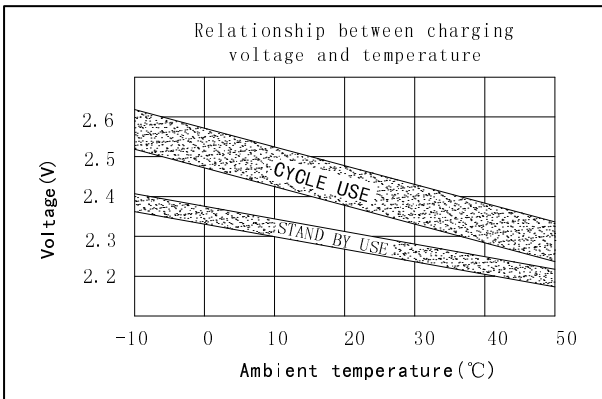
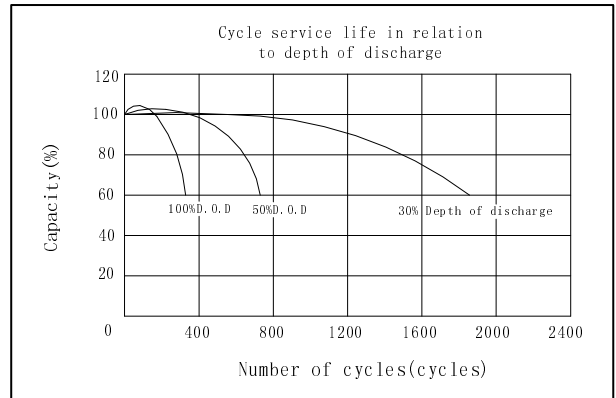
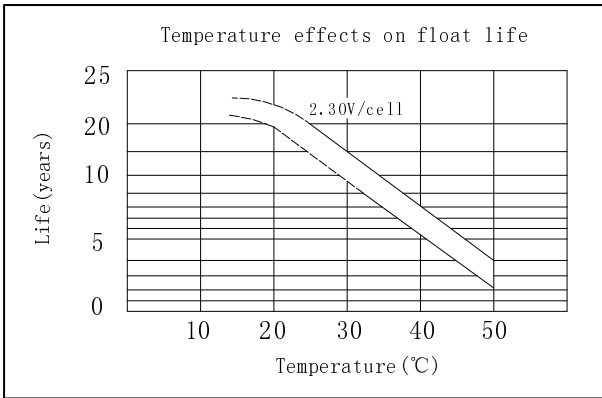
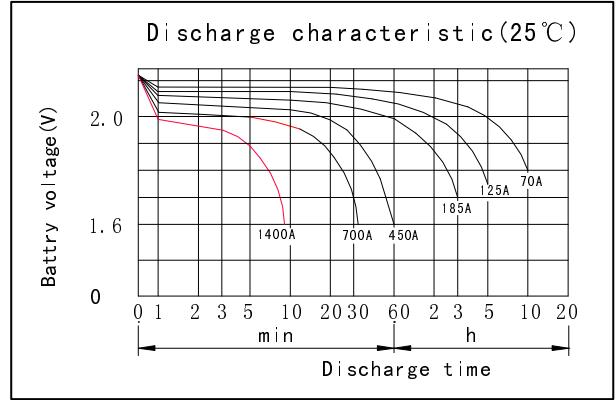
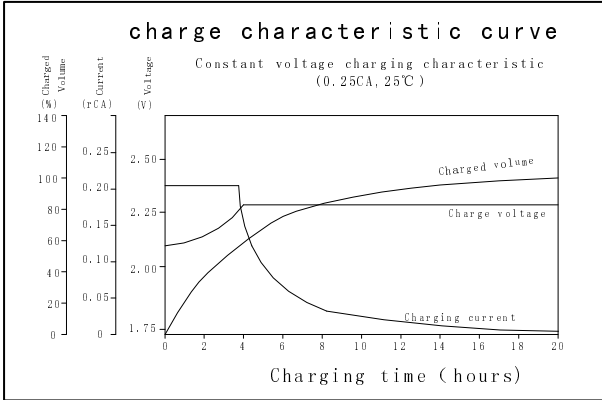
Discharge Constant Current (Amperes at 77° F 25 °C)

End Point Volts/Cell	5min	10min	15min	30min	45min	1h	3h	5h	10h
1.60V		1340	1030	740	555	450	195	131	74
1.65V		1275	985	710	535	435	190	129	73
1.70V		1210	945	680	515	420	185	127	73
1.75V		1145	900	650	495	405	180	125	72
1.80V		1075	855	610	472	388	174	122	70

Discharge Constant Power (watts at 77° F 25 °C)

End Point Volts/Cell	5min	10min	15min	30min	45min	1h	2h	3h	5h
1.60V		2345	1850	1340	1020	835	560	384	252
1.65V		2235	1780	1280	975	800	547	375	248
1.70V		2125	1710	1220	930	765	534	365	244
1.75V		2015	1640	1160	885	730	517	355	240
1.80V		1905	1560	1090	835	692	485	343	235

(Note)The above characteristics data are average values obtained Within three charge/discharge cycles not the minimum values.



GREAT POWER BATTERY TECHNOLOGY CO.,LTD

Address: Longguan 1st Road, LongHua Town, BaoAn District, Shenzhen, China.

TEL: 86-755-2900 8403 Fax: 86-755-3386 3366

Email: info@greatpowerbattery.com Http:// www.greatpowerbattery.com

